



# CLOP 24V100Ah LiFePo4 Battery with BMS datasheet

## LITHIUM IRON PHOSPHATE BATTERY

### ELECTRICAL SPECIFICATIONS

Nominal Voltage	24 V
Nominal Capacity	100 Ah
Capacity @ 25A	100 Ah
Energy	2560 Wh
Resistance	≤ 50 mΩ
Efficiency	99%
Self Discharge	≤ 100μA
Maximum Modules in Series	1 (Single Use)

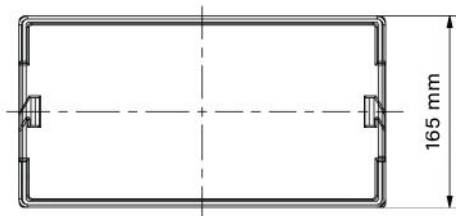
### DISCHARGE SPECIFICATIONS

Maximum Continuous Discharge Current	0.5C
Peak Discharge Current	85 A / 10 ms
BMS Discharge Current Cut-Off	100 A
Recommended Low Voltage Disconnect	22 V
BMS Discharge Voltage Cut-Off	20 V
Reconnect Voltage	24 V
Short Circuit Protection	YES

### TEMPERATURE SPECIFICATIONS

Discharge Temperature	-15°~60°	
Charge Temperature	-5°~55°	
Storage Temperature	25°	
BMS High Temperature Cut-Off	Charge 55°	Discharge 60°
Reconnect Temperature	Charge 50°	Discharge 55°

### DIMENSIONAL SPECIFICATIONS



### MECHANICAL SPECIFICATIONS

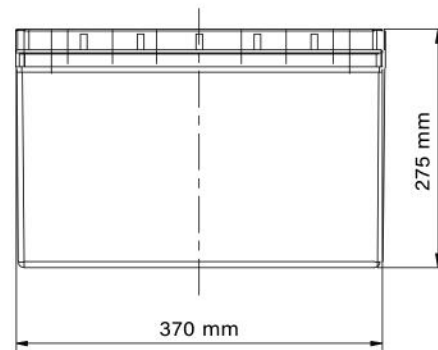
Dimensions (L x W x H)	370 x 165 x 275 mm
Weight	28 kg
Terminal Type	Anderson
Terminal Torque	120A
Case Material	Cold-strip steel
Enclosure Protection	IP54
Cell Type - Chemistry	LiFePO4

### CHARGE SPECIFICATIONS

Recommended Charge Current	0.2C~0.5C
Maximum Charge Current	50 A
Charge Current -10 to 0 °C ≤ 0.1 C	Can not charge
Charge Current -20 to -10 °C ≤ 0.05	Can not charge
Recommended Charge Voltage	29.2 V
BMS Charge Voltage Cut-Off	29.2 V
Reconnect Voltage	26.8 V
Balancing Voltage	No

### COMPLIANCE SPECIFICATIONS

Certifications	CE (battery) UL1642 & IEC62133 (cells)
Shipping Classification	UN 3480, CLASS 9



## CLOP 24V100Ah LiFePo4 Battery with BMS datasheet

### PERFORMANCE CHARACTERISTICS

